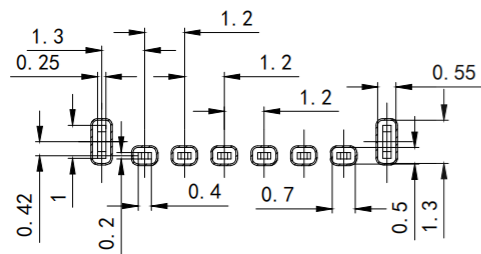
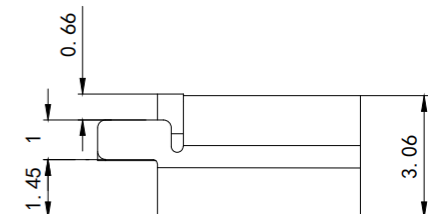
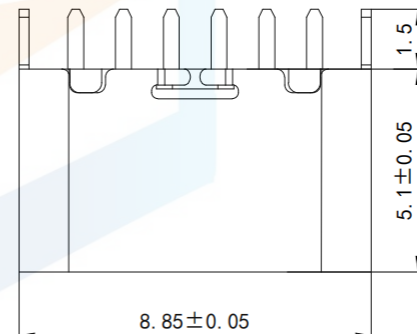
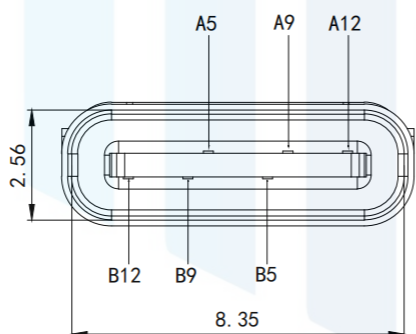
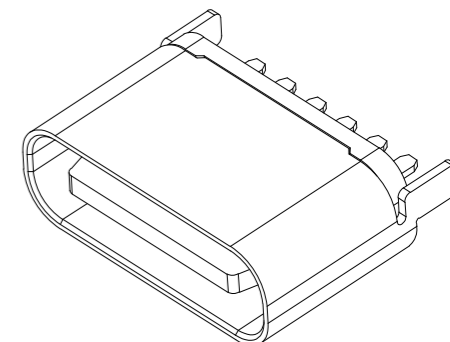
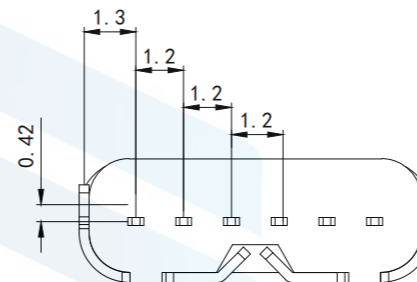
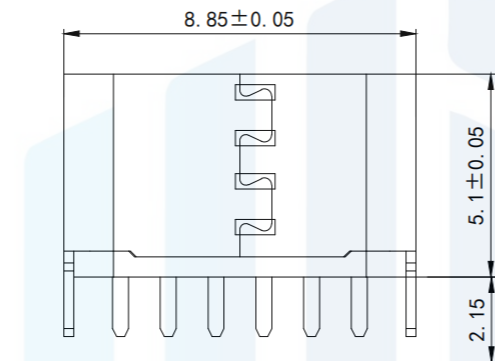


RoHS2.0
Compliant



RECOMMENDED P.C.B LAYOUT (COMPONENT SIDE)
TOLERANCE UNSPECIFIED $\pm 0.05\text{mm}$



NOTE:

- Material:
 - Rubber core: LCP UL94 V-0
 - Terminal: C2680, T=0.2mm; Nickel base, gold plated
 - Housing: stainless steel 201-H surface nickel-plated
- Electrical characteristics:
 - Contact area: contact resistance 40mΩ Max, allowing 10mΩ variation
Test conditions :20mv, 100mA measurement.
 - Contact current: 3A VBUS pin; 1.25A for GND Pin; The other pins are 0.25A.
 - Rated voltage: 5V.
 - Withstand voltage: 100VAC.
 - Insulation resistance: at least 100 megohm.
- Mechanical properties:
 - Insertion force: 0.5-2.0Kg
 - Pullout force: 0.6-2.04Kg
 - Insertion and removal times: 5000 times.
- Working environment: -20°C to +85°C.
- Resistance to welding heat: the terminal is immersed in the tin tank at 250±5°C; The duration is 3-5S±0.5Sec, and the tin-stained area is above 95%
- Appearance: The parts can withstand the following welding conditions: Temperature 250°C, time 8-10 seconds, appearance without damage deformation
- Packing: boxed, 1000pcs per box braid, 1000pcs per disc

TOLERANCE			东莞市恒祺电子科技有限公司 Dongguan Hengqi Electronic Technology Co., Ltd		
X. XXX	±0.05				
X. XX	±0.15	https://www.hq-dz.com			phone:15812872448
X. X	±0.20	TITLE: TYPE C 6P立式直插L=5.1 脚1.5针0.4		PART NO:成品图	
X.	±0.30			DRAWING NO:8.85*5.1*3.06	
ANGLE	±5.0°	DRAWN: _____ CHECKED: _____ APPROVED: _____		DATE: 18-10-08	UNIT: mm
				DATE: 18-10-08	SCALE: FULL
				DATE: 18-10-08	SIZE: A4